

20X20FT-BOOTH-05

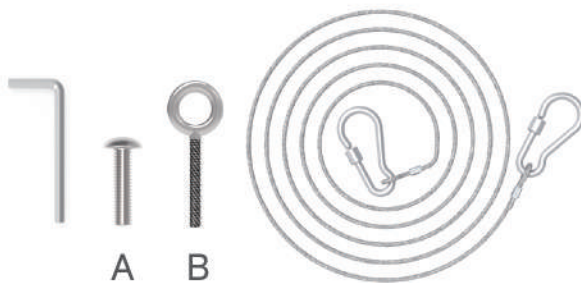
★ One Tool (Hex Wrench)

STEPS

(1) Hardware



(2) Screw A, Screw B, Wire with Hook

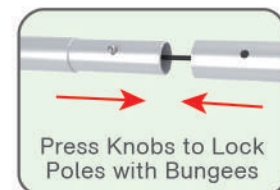


(3) Printed Graphic Fabric Banner (Optional)



STEP 01

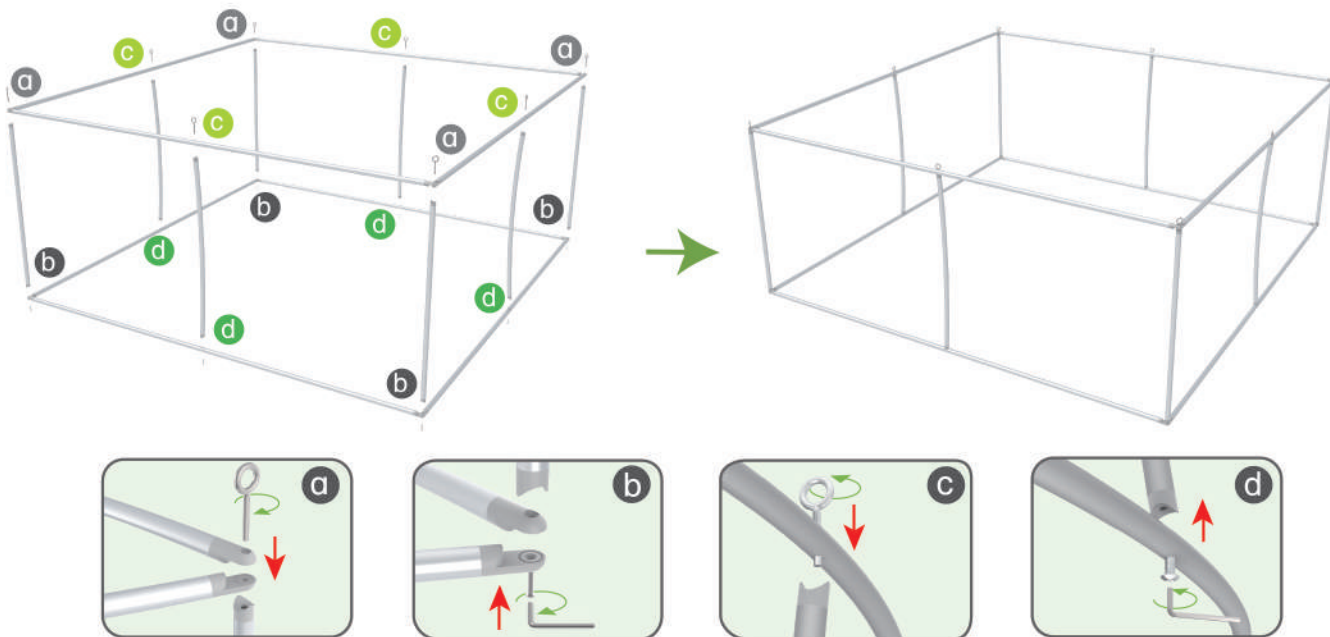
Connect to make long poles according to labelings.



STEPS

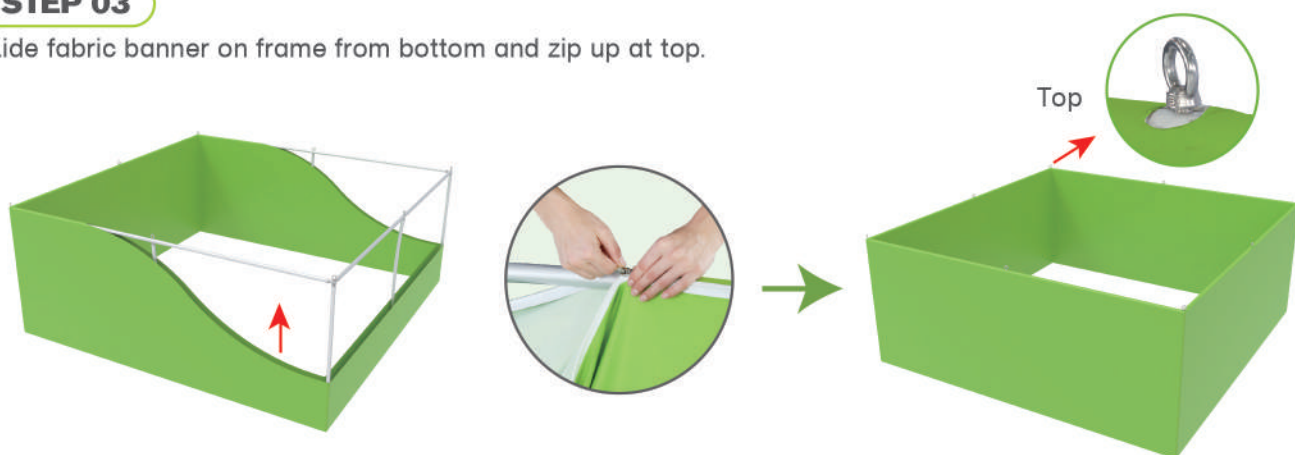
STEP 02

Connect support poles onto frame with screws B at top & screws A at bottom.



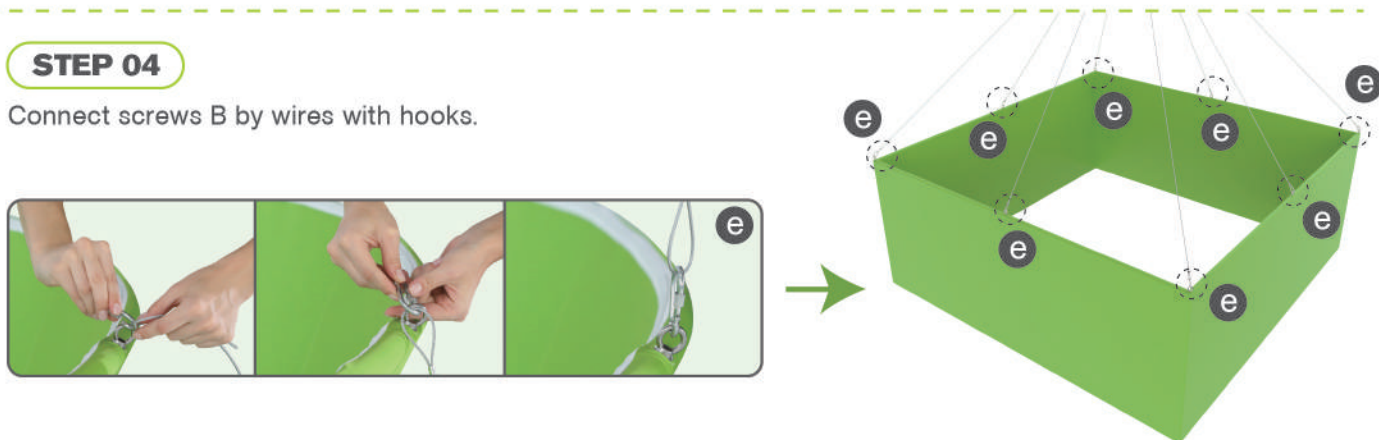
STEP 03

Slide fabric banner on frame from bottom and zip up at top.



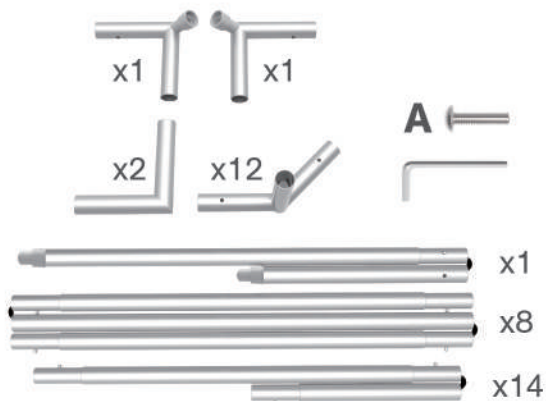
STEP 04

Connect screws B by wires with hooks.

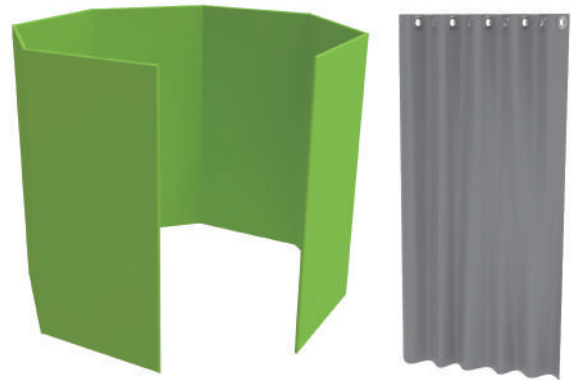


STEPS

(1) Hardware

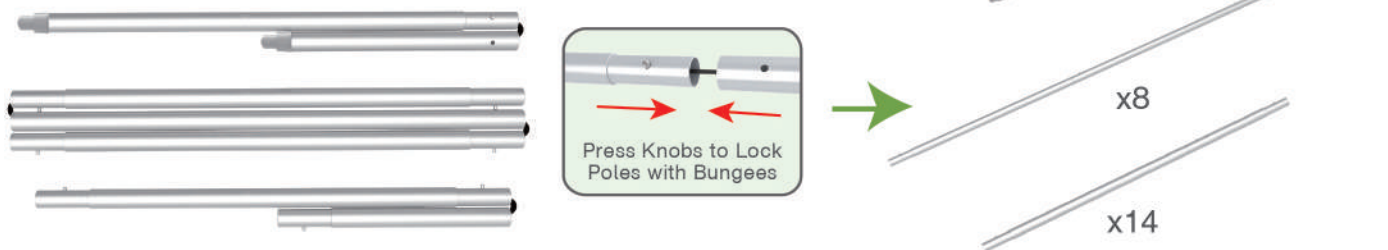


(2) Printed Graphic Fabric Banner (Optional)



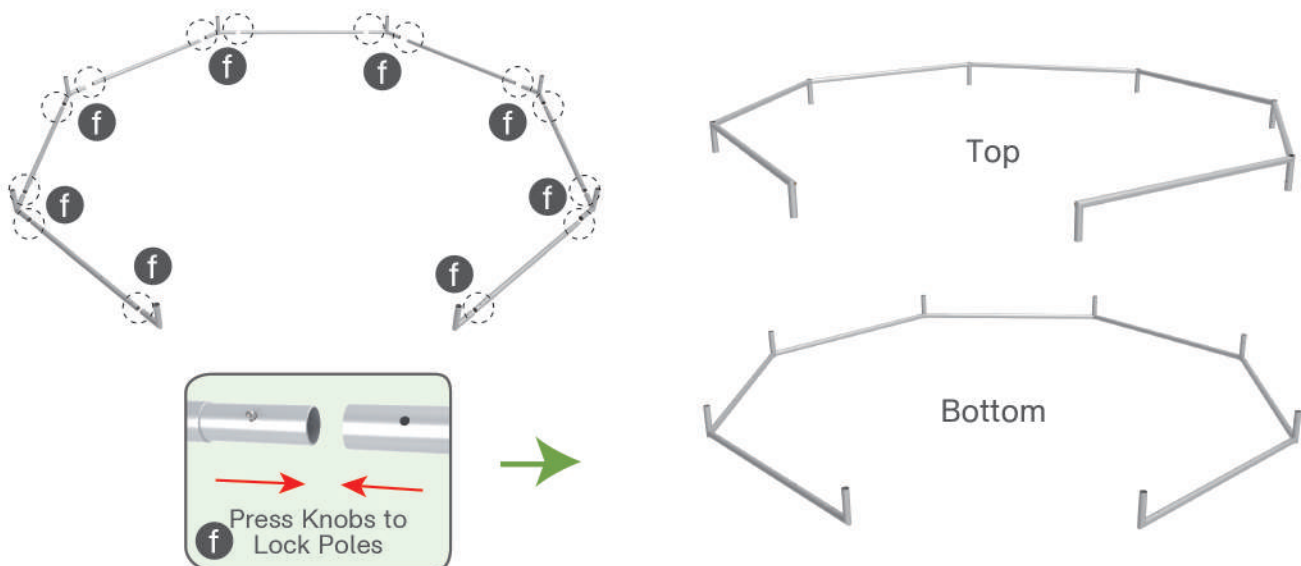
STEP 01

Connect to make long poles according to labelings.



STEP 02

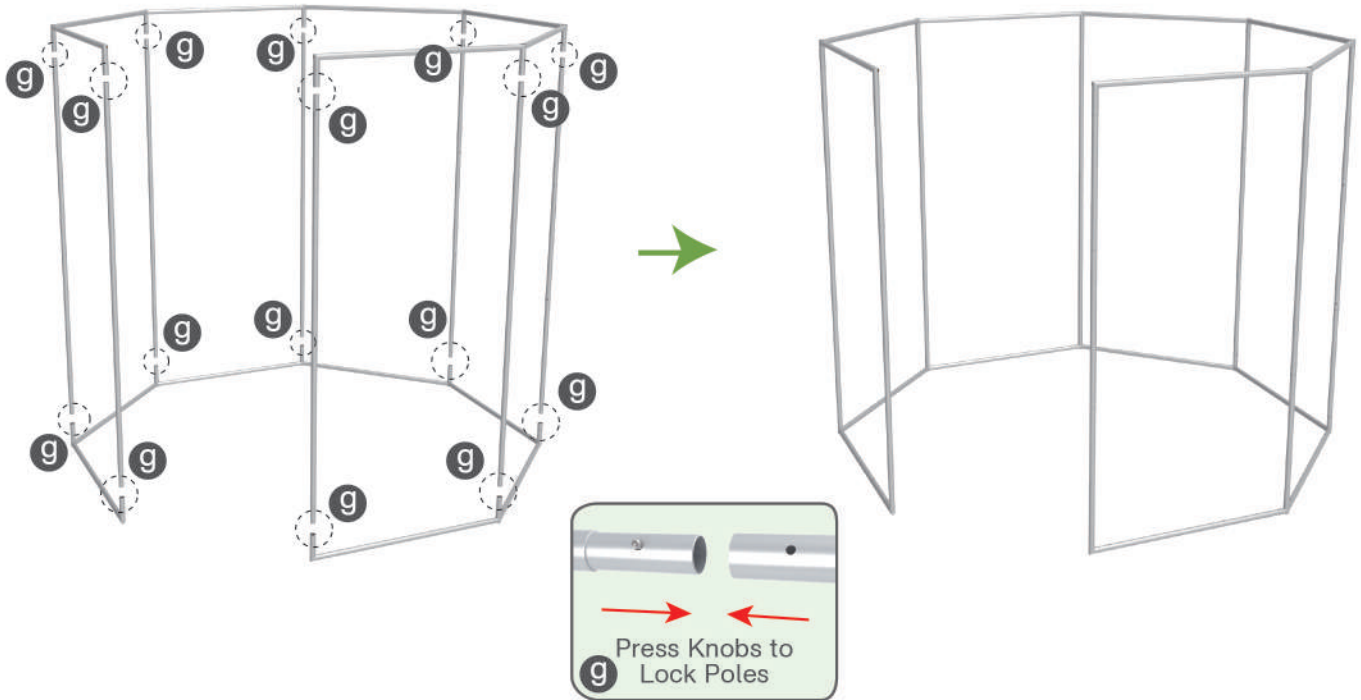
Connect long poles with corner poles according to labelings.



STEPS

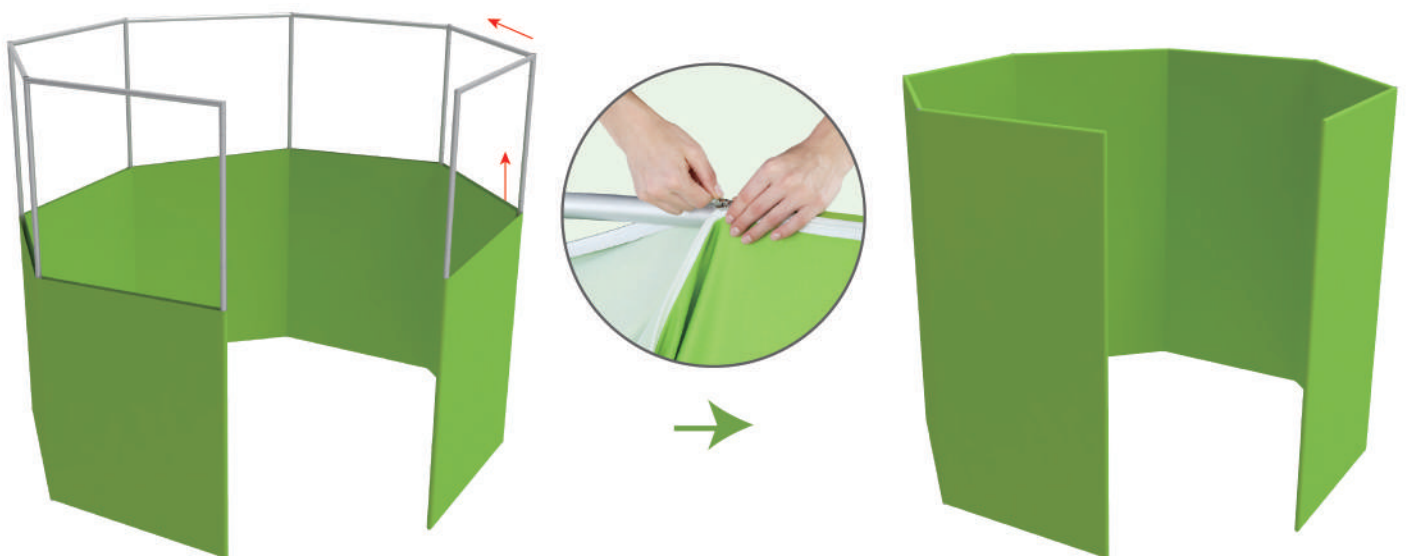
STEP 03

Connect long poles with corner poles according to labelings.



STEP 04

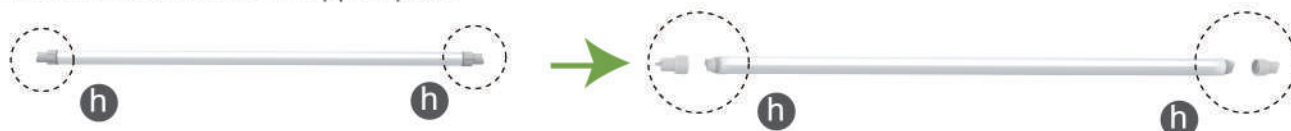
Slide fabric banner on frame from bottom and zip up at top.



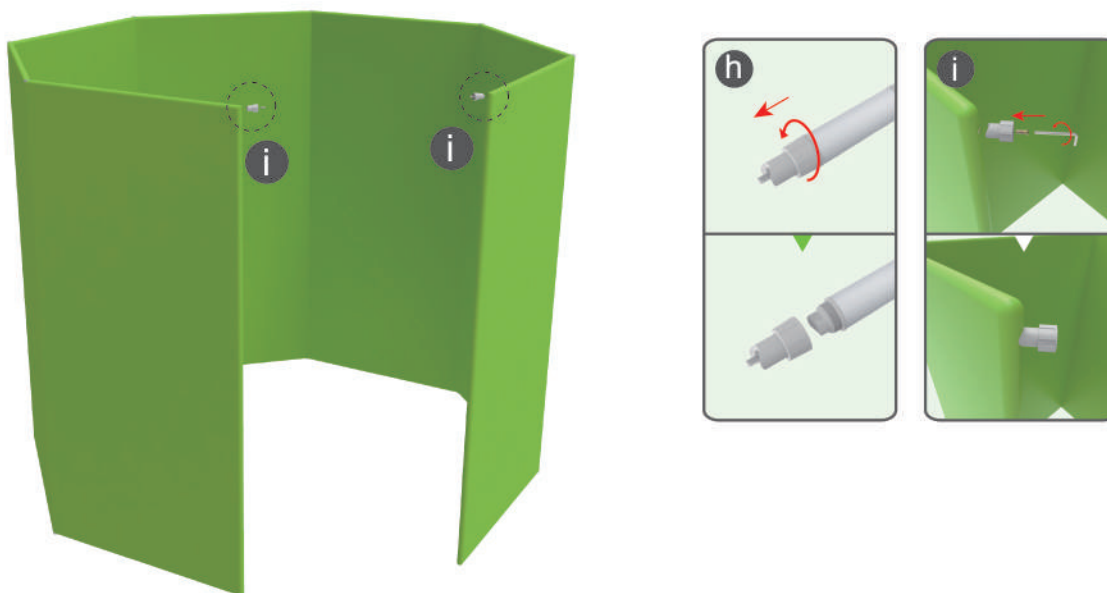
STEPS

STEP 05

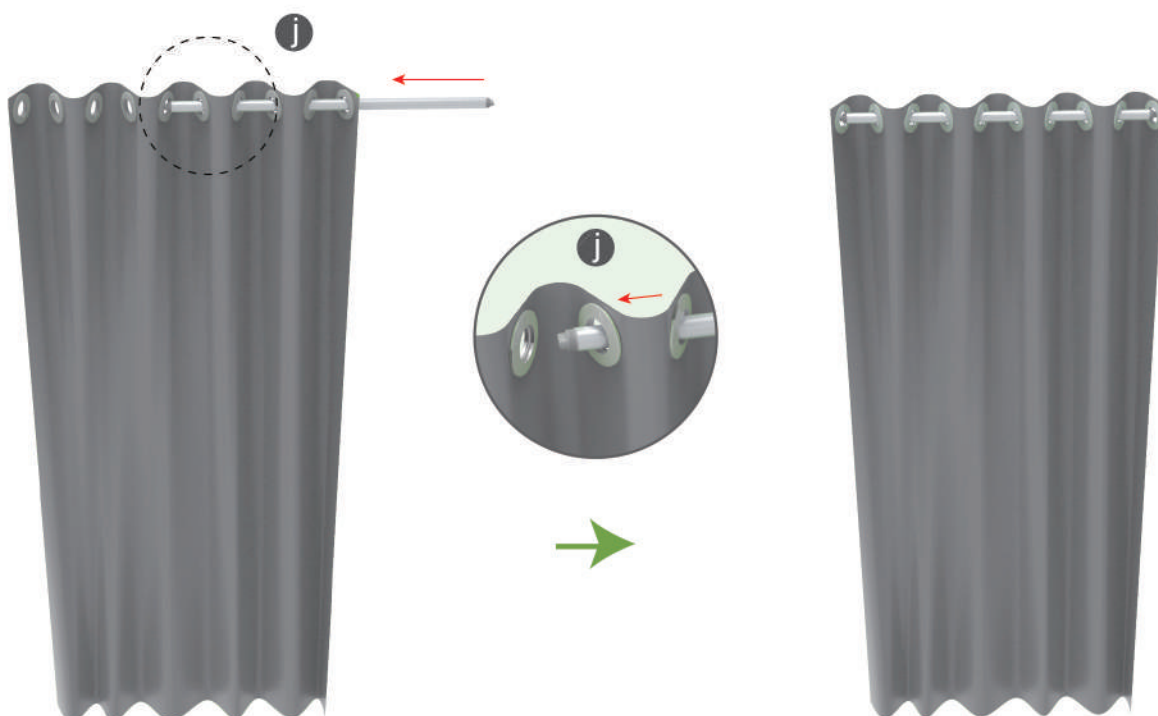
- ① Disassemble slots from support pole.



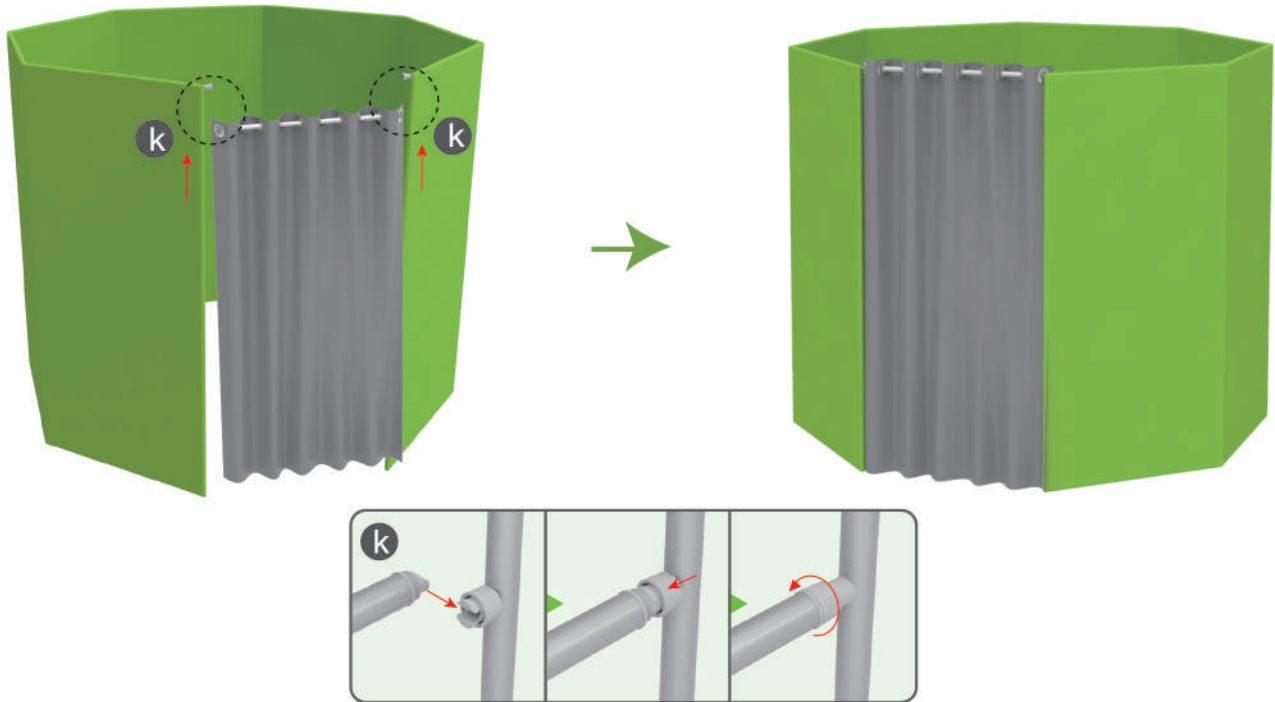
- ② Install slots onto enclosure.



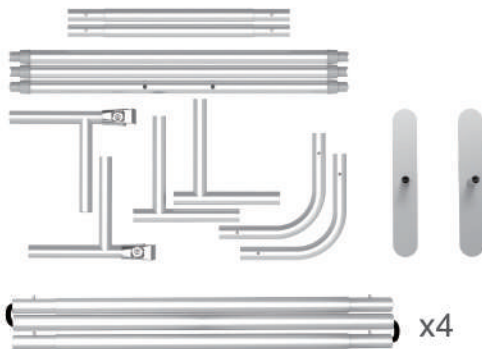
- ③ Slip support pole through curtain with grommets.



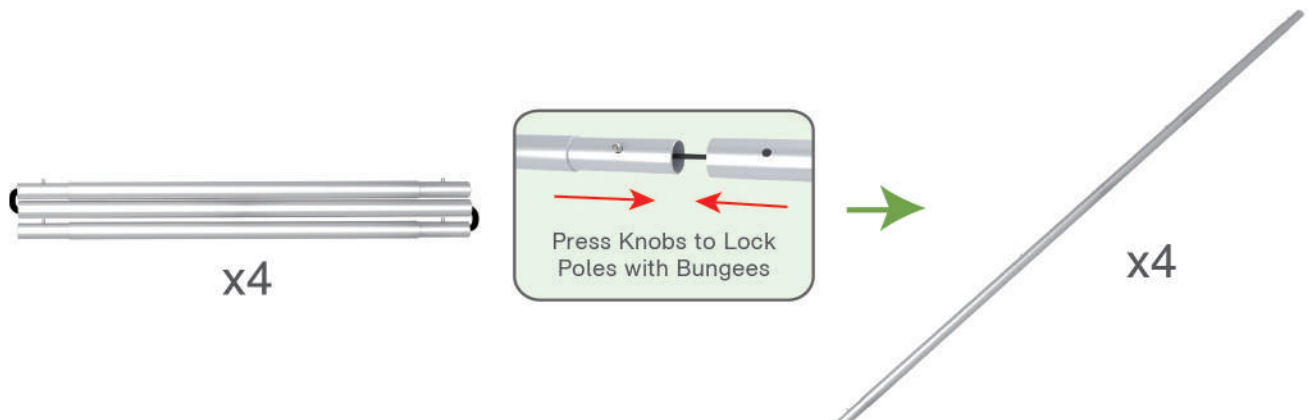
STEPS

STEP 06 Screw support pole with curtain into slots.

(1) Hardware

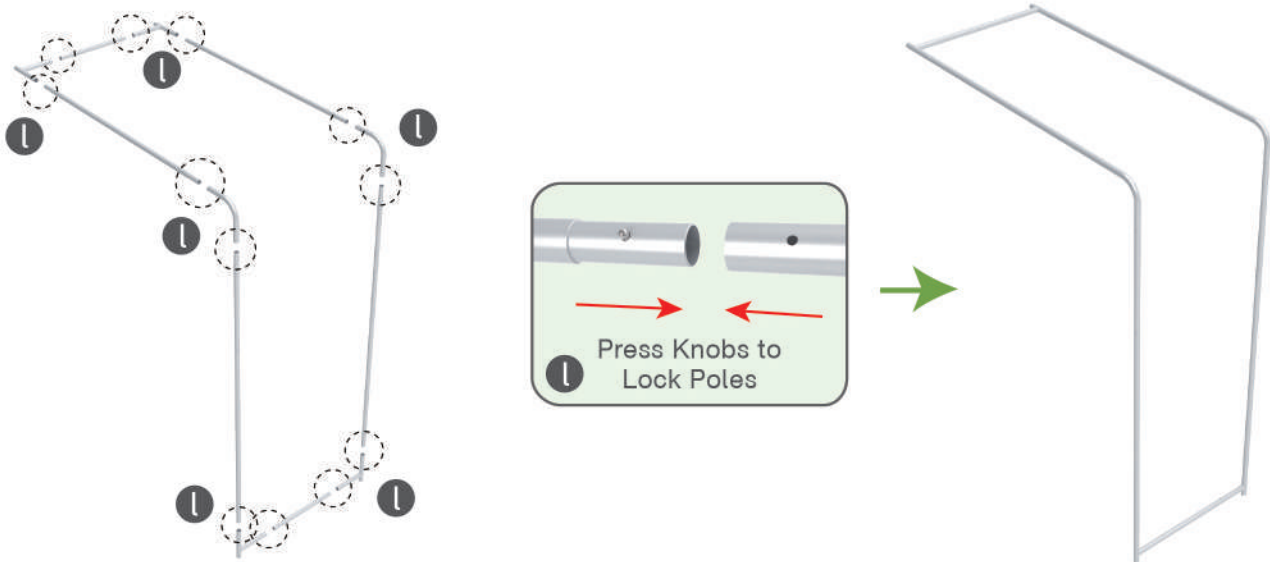


(2) Printed Graphic Fabric Banner (Optional)

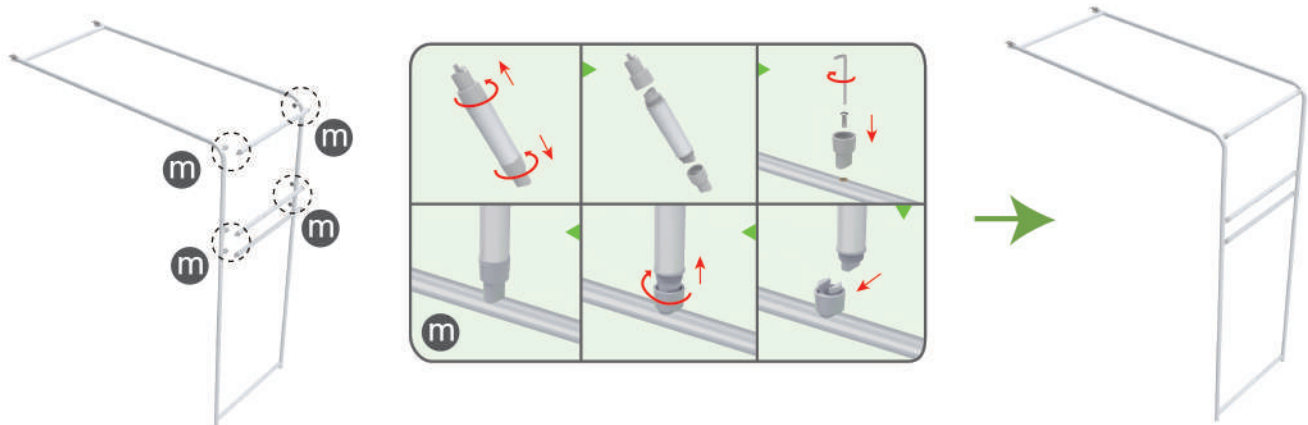
**STEP 01** Connect to make long poles according to labelings.

STEPS

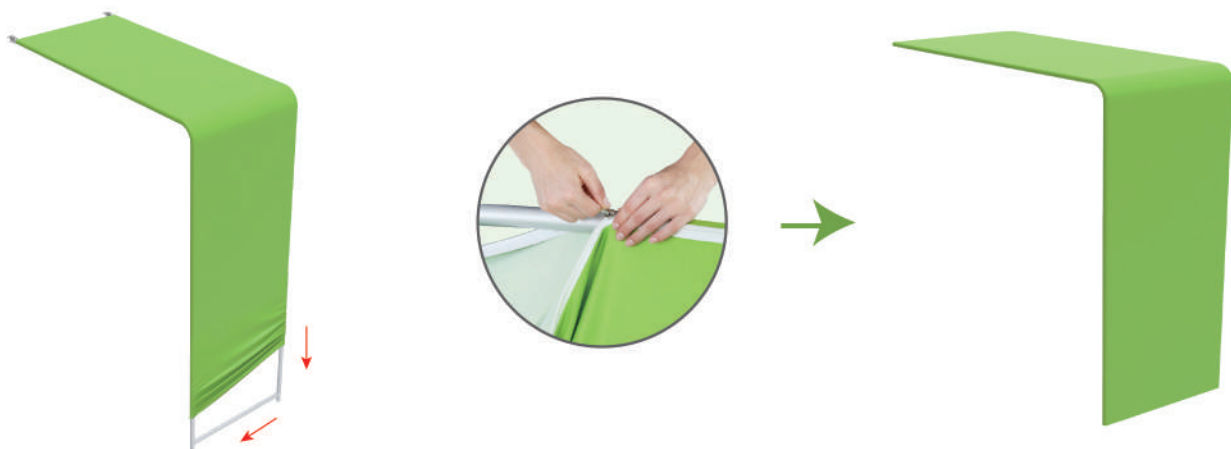
STEP 02 Connect long poles with corner poles according to labelings.



STEP 03 Connect support poles onto frame.

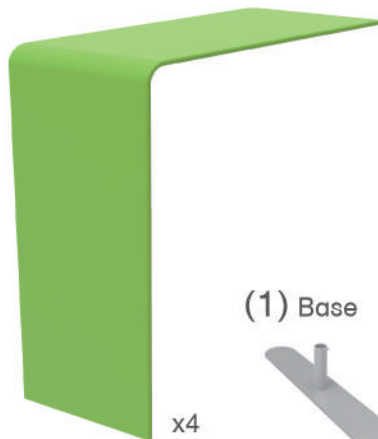
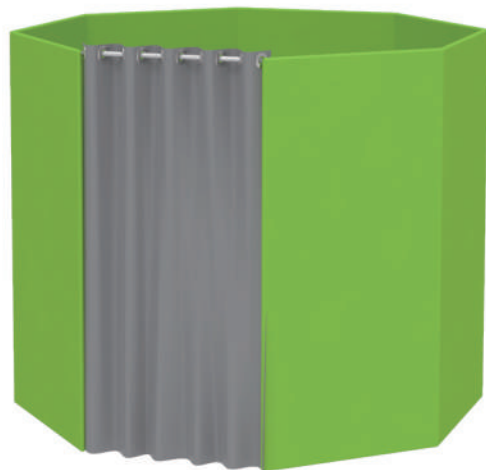


STEP 04 Slide fabric banner on frame from top and zip up at bottom.

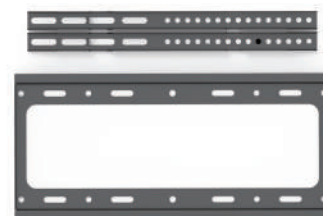


STEPS

Booth Set Assembly



(3) TV Mount & Screw



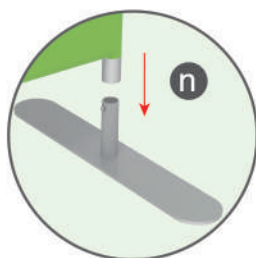
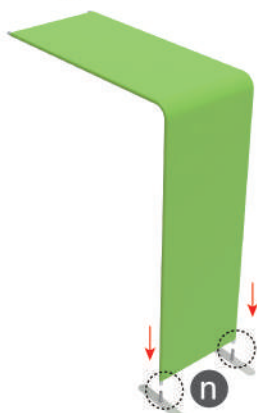
(1) Base

(2) Arm Clip



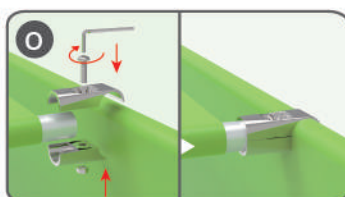
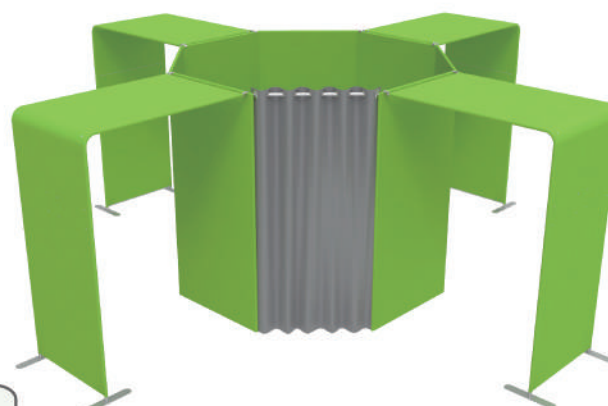
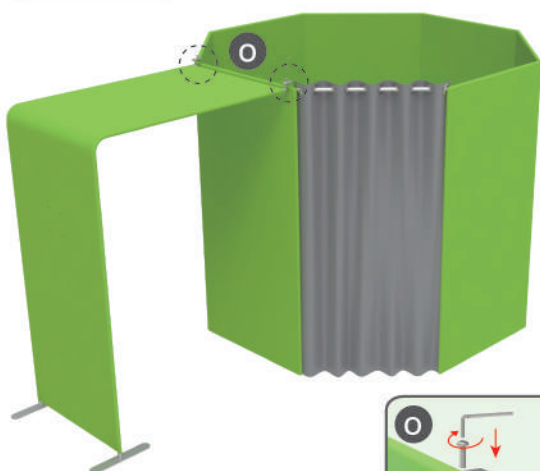
STEP 01

Insert display stands onto feet by pressing their knobs.



STEP 02

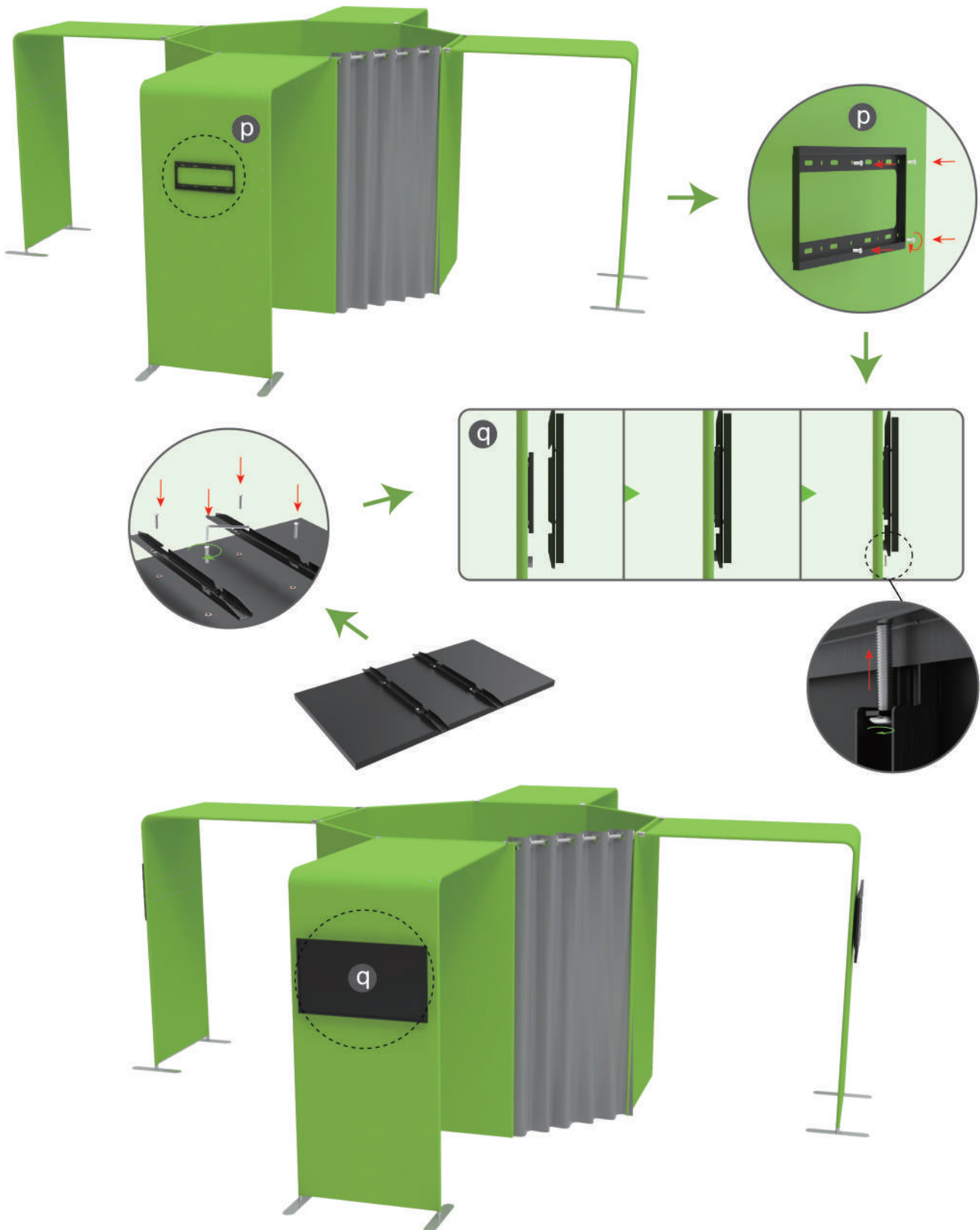
Connect display stands with arm clips.

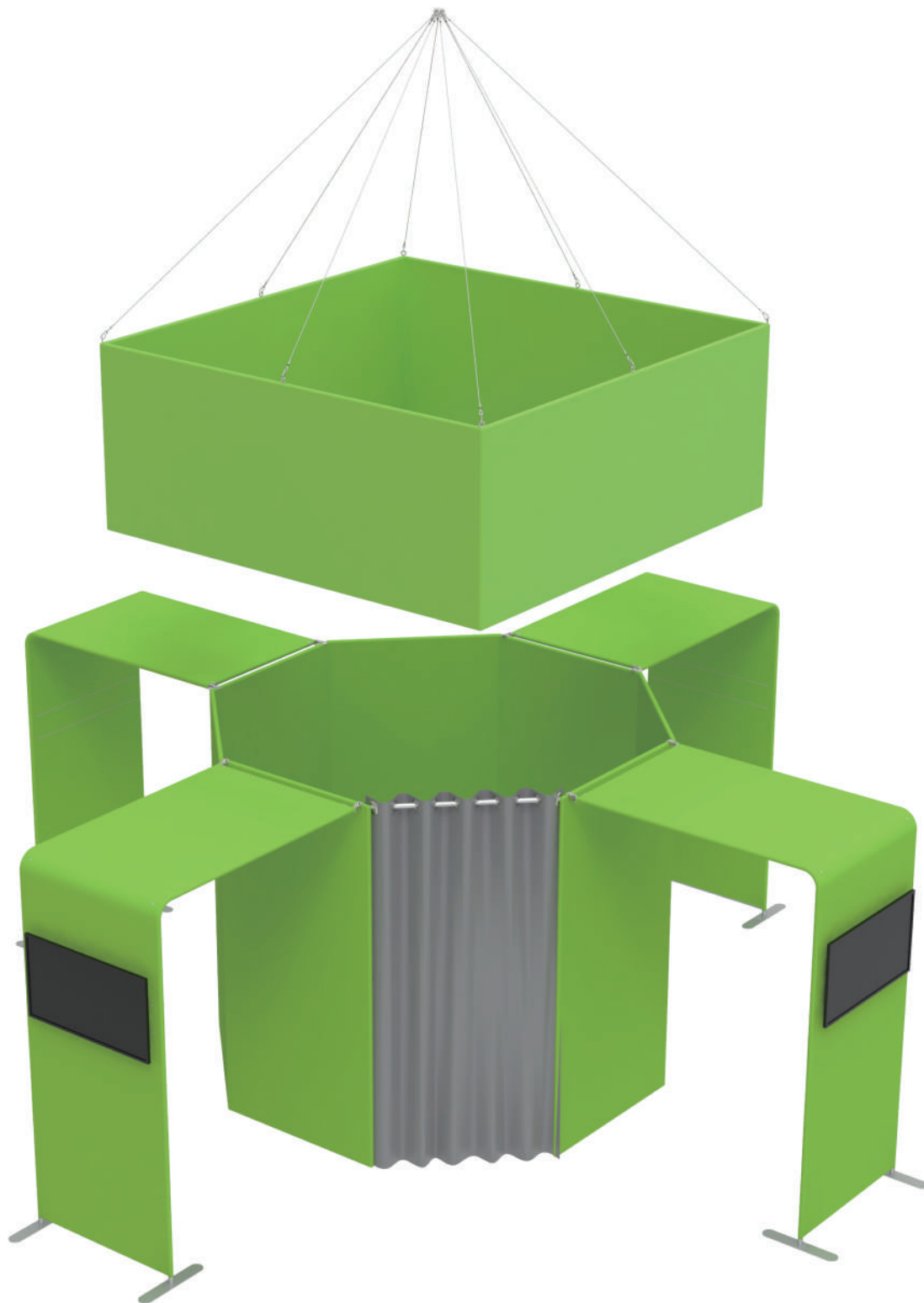


STEPS

STEP 03

Screw TV mount with hex wrench.



STEPS**20X20FT-BOOTH-05**

STEPS

(1) Durable Plastic Hard Case, Aluminum Support Poles

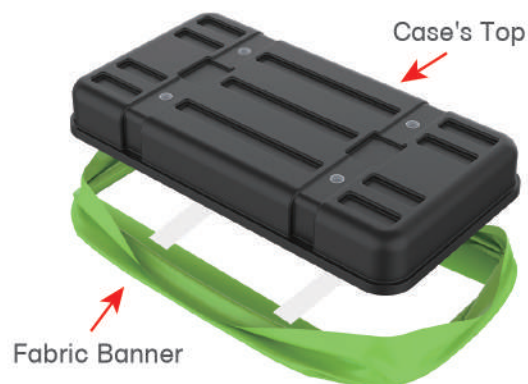


(2) Printed Graphic Fabric Banner



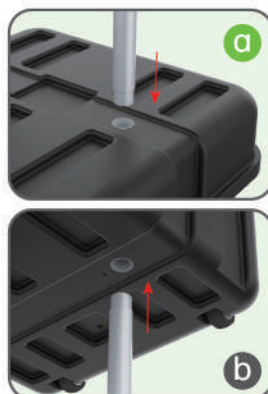
STEP 01

Put hard case's top into fabric banner.



STEP 02

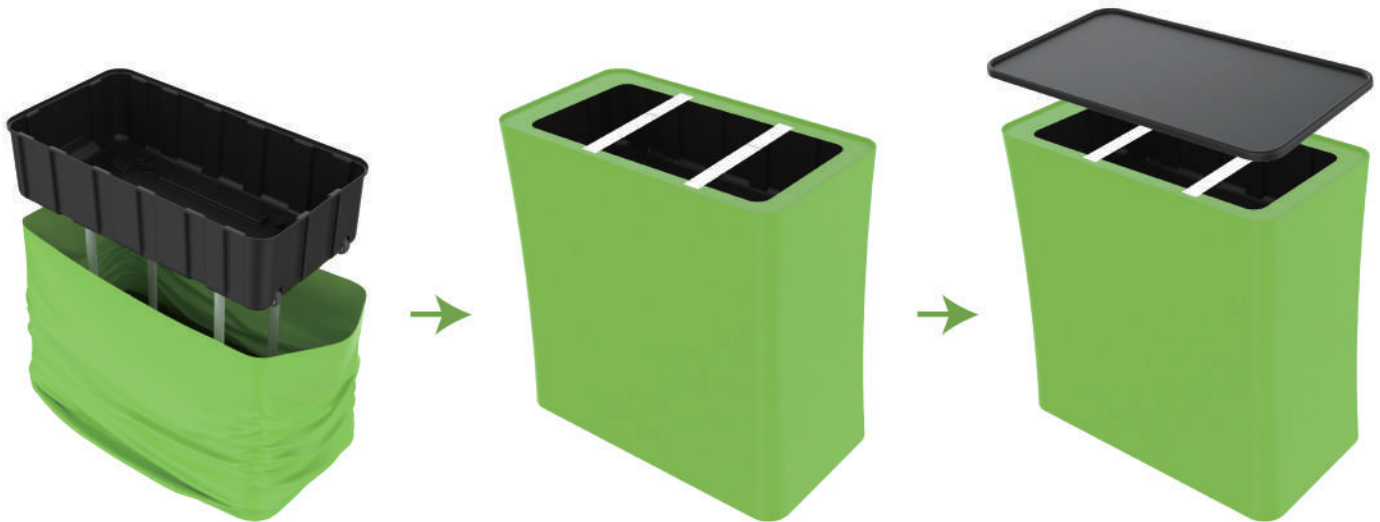
Insert support poles into hard case's top & bottom.



STEPS

STEP 04

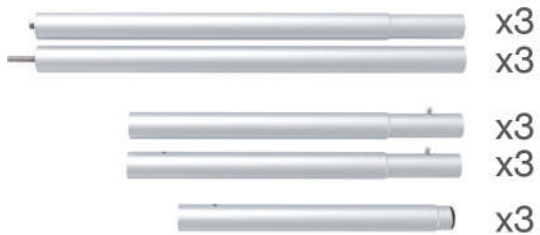
Wrap fabric banner from bottom to top & twist it to be smooth, lay hard case's intermediate panel on podium's top.



★ One Tool (Hex Wrench)

STEPS

(1) Straight Support Poles



(2) Top MDF Board, Bottom MDF Board, Acrylic Boards

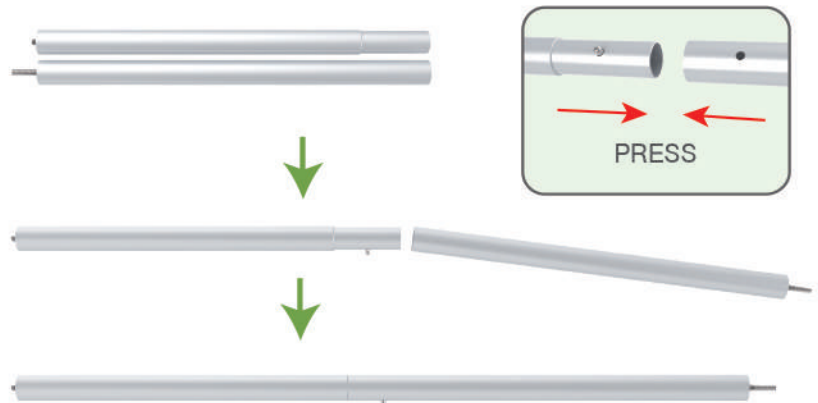


(3) Printed Graphic Fabric Banner



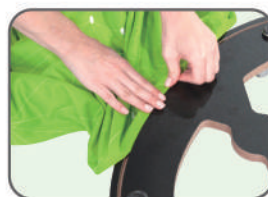
STEP 01

Connect straight support poles by pressing knobs to lock.



STEP 02

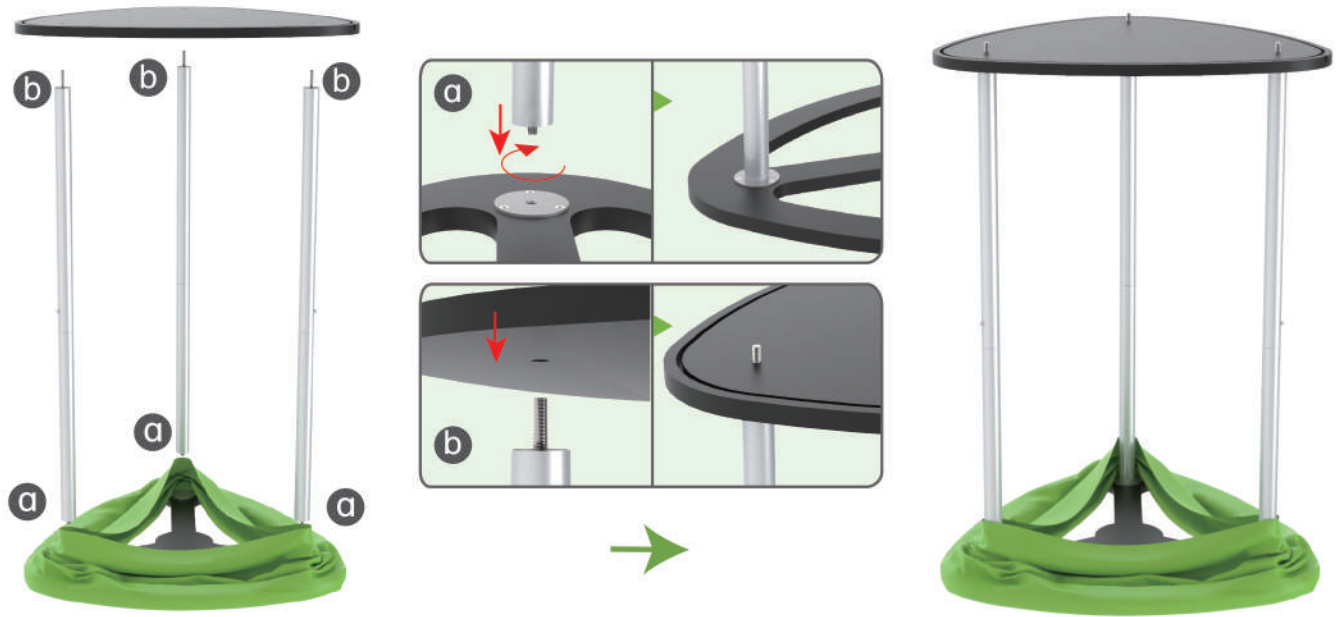
Insert fabric banner into bottom MDF board's slot and turn it over.



STEPS

STEP 03

Screw straight support poles in bottom MDF board's threaded holes and place top MDF board on them.



STEP 04

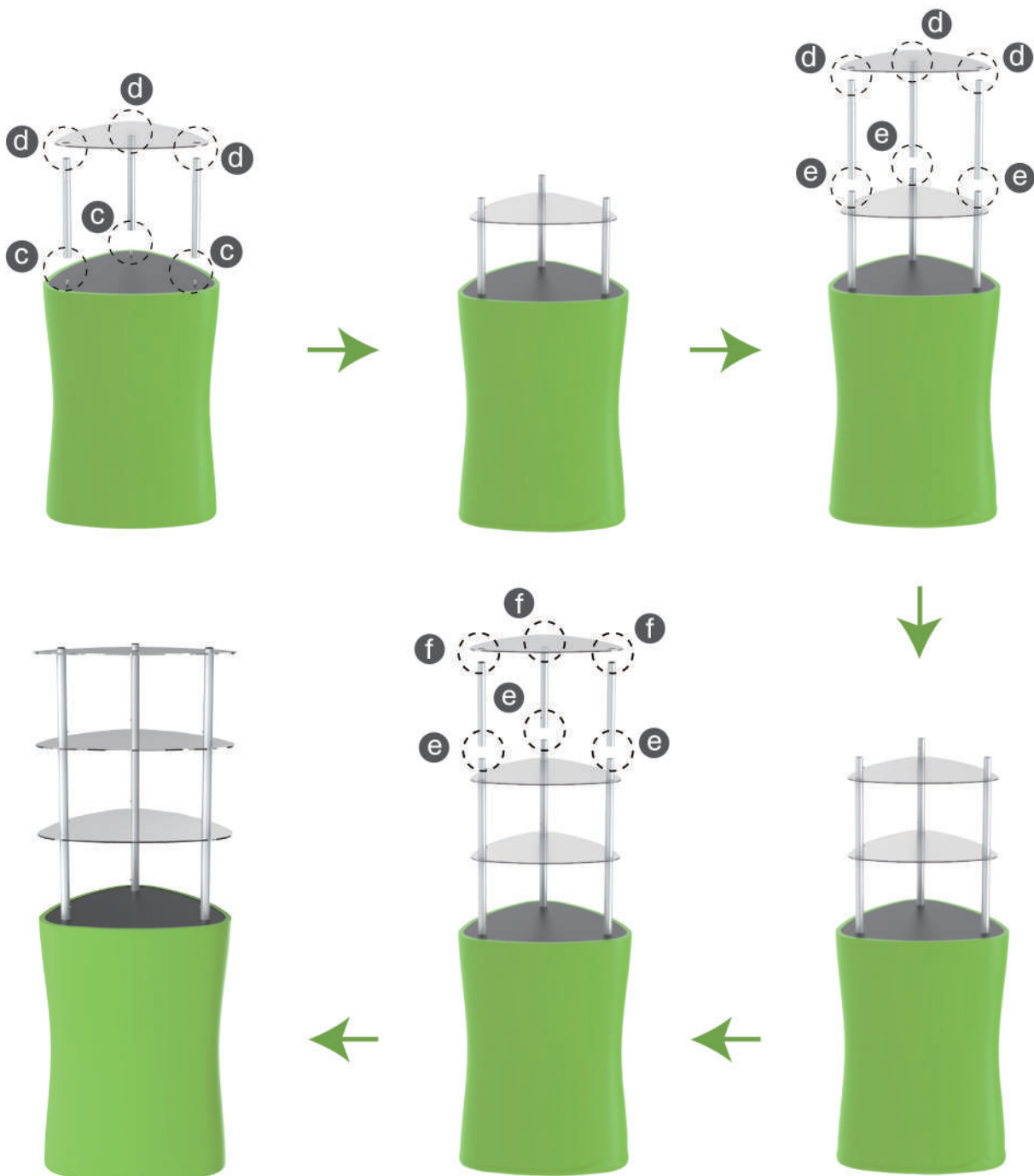
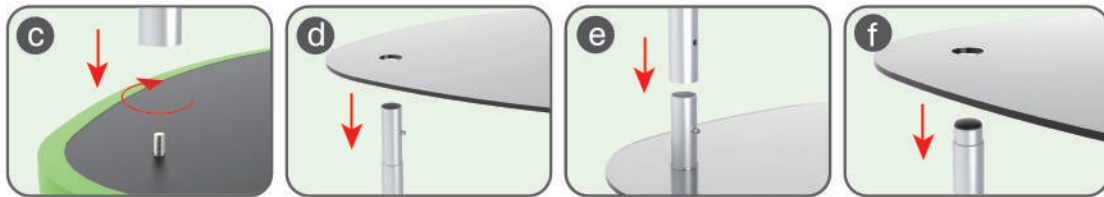
Pull fabric banner from bottom to top and insert into top MDF board's slot.



STEPS

STEP 05

Screw straight support poles with threaded holes filled onto nuts and place acrylic boards on them layer by layer.



STEPS



DT-S-02



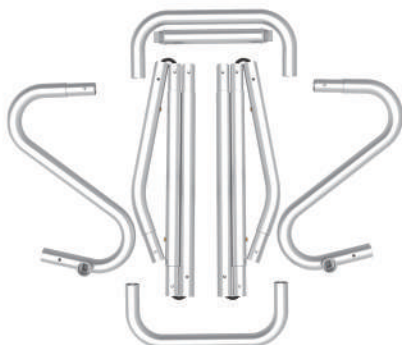
DT-S-01



DT-S-03

STEPS

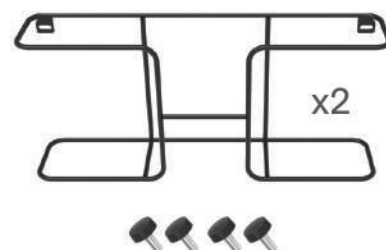
(1) Snap Tubes



(2) Printed fabric banner

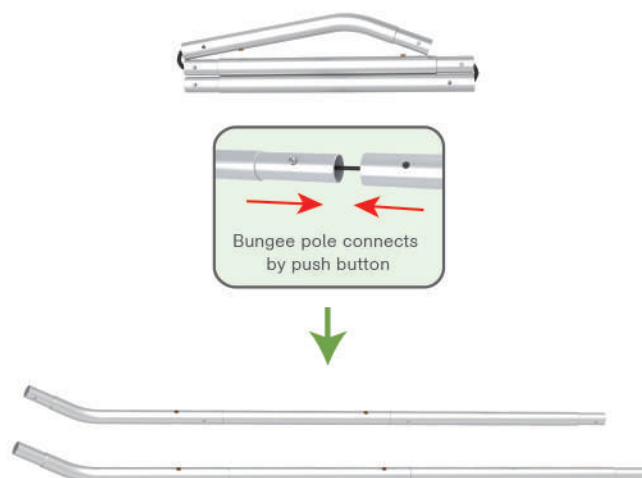


(3) Brochure rack x 2
Screws x 4



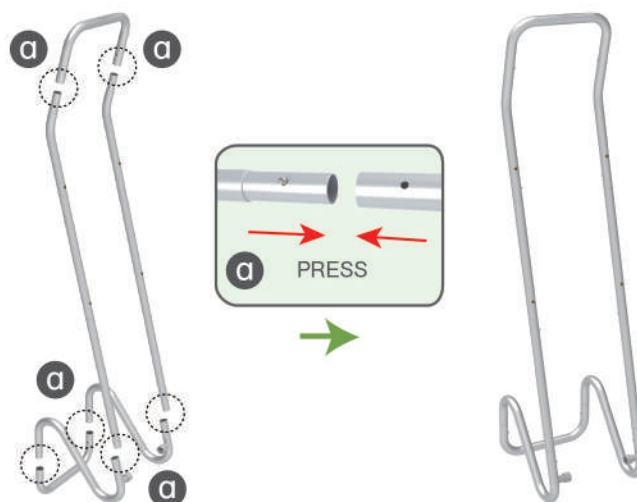
STEP 01

To Connect the tubes according to the labellings



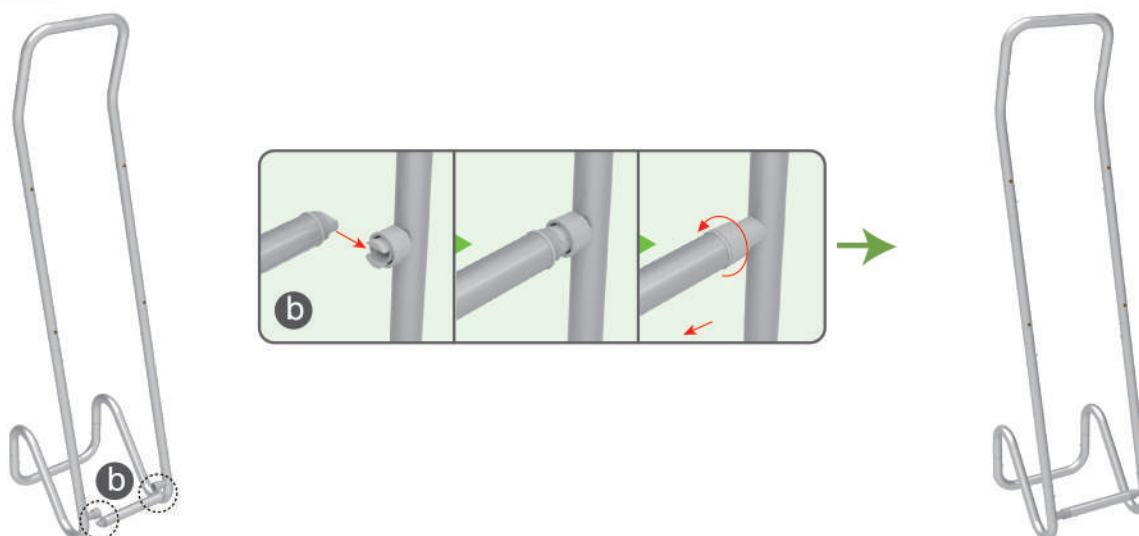
STEP 02

To connect 2 long side tubes by the corner pieces



STEP 03

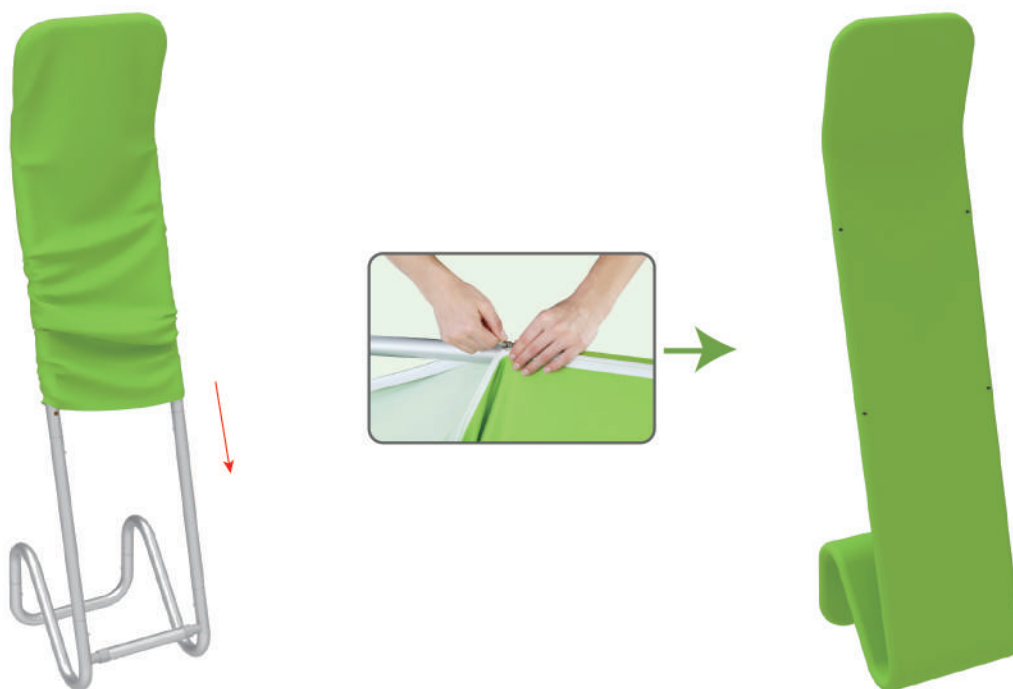
To install the cross bar according to labellings



STEPS

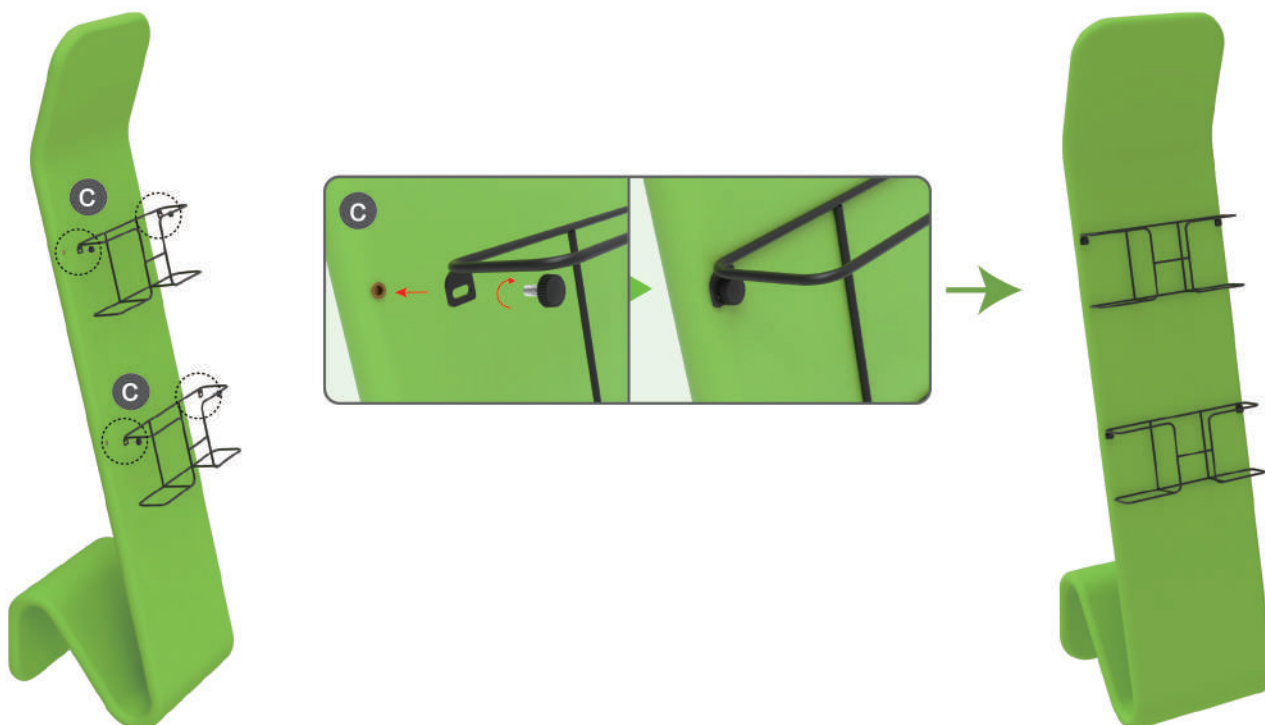
STEP 04

To Wrap up the fabric banner from top to bottom and zip up.



STEP 05

To install 2 racks by screws in position

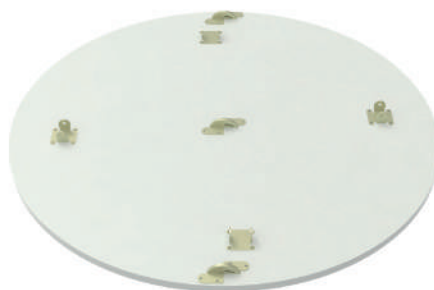


STEPS

(1) Hardware



(2) Countertop Panel



(3) Fixing Accessory

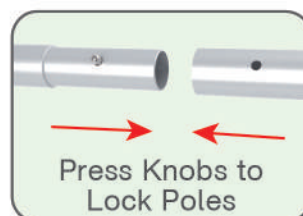


(4) Printed Graphic Fabric Banner



STEP 01

Connect to make long poles according to labelings.



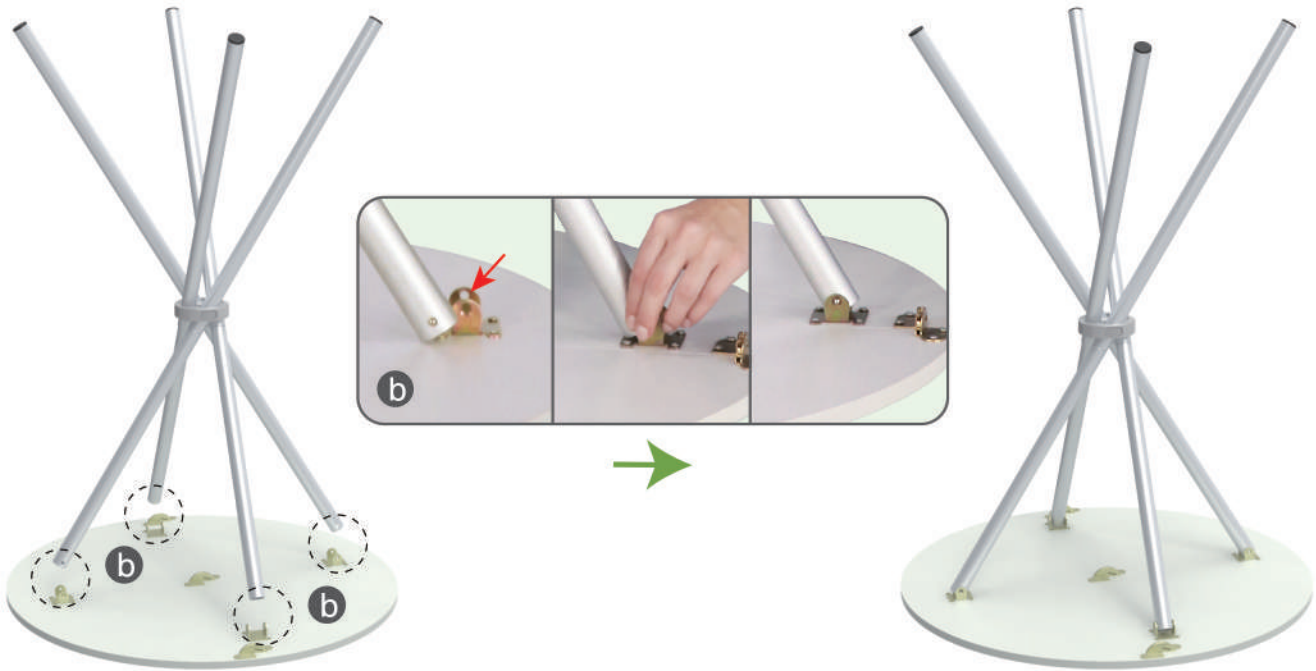
STEP 02

Insert poles into fixing accessory until you hear a 'Ding' sound to make poles' knobs clip into it & its concave parts pop out.



STEPS

STEP 03 Press poles' knobs to clip into countertop's slot.



STEP 04

Wrap fabric banner from top to bottom, put poles into pockets & zip up.

